



## THRUSTERS

SEAMOR Marine's thrusters are well known for their high performance and rugged design. Available in 300m & 600m depth ratings, these thrusters utilize top quality 150W Maxon DC motors and gearboxes. Powerful custom 4" props and nozzles generate over 6kg (13lbs) of thrust in the forward direction and 3kg (6.75lb) of thrust in reverse at 48VDC input. Each

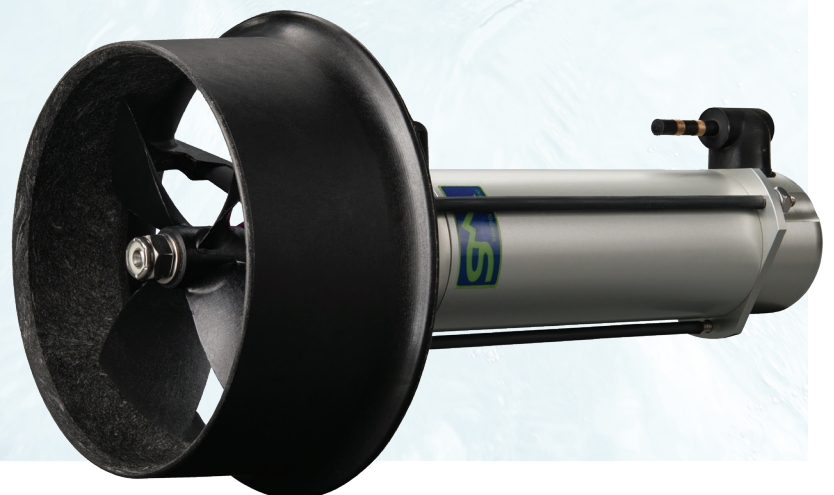
thruster is constructed from anodized aluminum and pressure-tested. Both the 300m & 600m models utilize replaceable shaft seal cartridges to make service simple and straightforward, and a built-in grounding stud enables easy connection to a sacrificial anode. Left- and right-handed propellers are available to meet end users' needs.

### DIMENSIONS

Total length: 7.732" (247.2mm)  
Nozzle OD: 4.953" (125.8mm)  
Body OD: 1.75" (44.45mm)  
Prop diameter: 4" (101.6mm)

### THRUST

Forward: 13lb (5.9kg) thrust @ 48V, 2.7A  
Reverse: 6.75lb (3kg) thrust @ 48V, 2.5A  
Utilizes precision Maxon 150W  
brushed DC motors & gearboxes



1914 Northfield Road  
Nanaimo, BC  
V9S 3B5 Canada

**t** 250-729-8899  
**tf** 888-729-8890  
**e** sales@seamor.com

[seamor.com](http://seamor.com)